

# How to...

## Set up Tap and Go

# SAFE TAG APP

# SAFE TAG APP

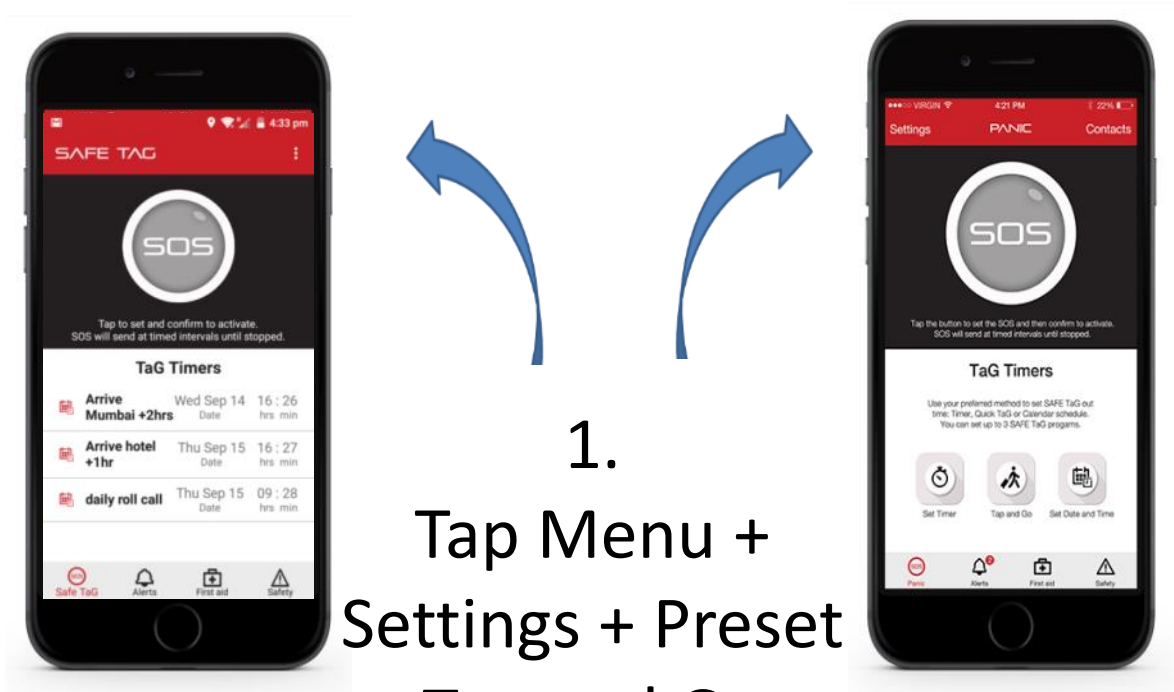
2 ways to Set up Tap and Go

*‘for any regular activity.’*



# SAFE TAG APP

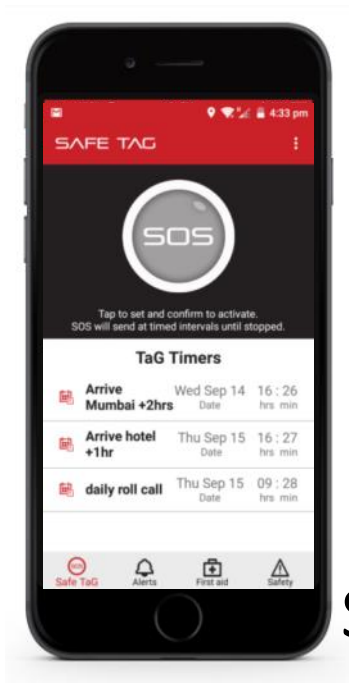
Through Settings



1.  
Tap Menu +  
Settings + Preset  
Tap and Go  
or

# SAFE TAG APP

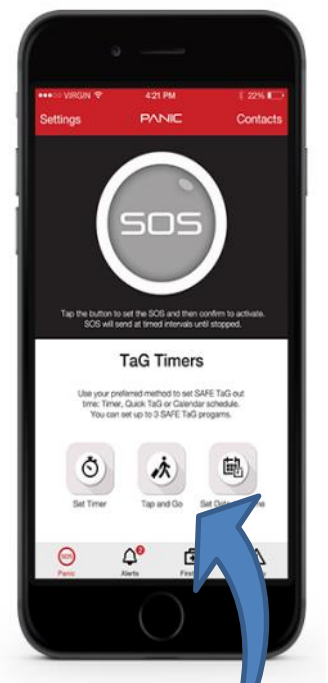
Through Tap and Go Timer button



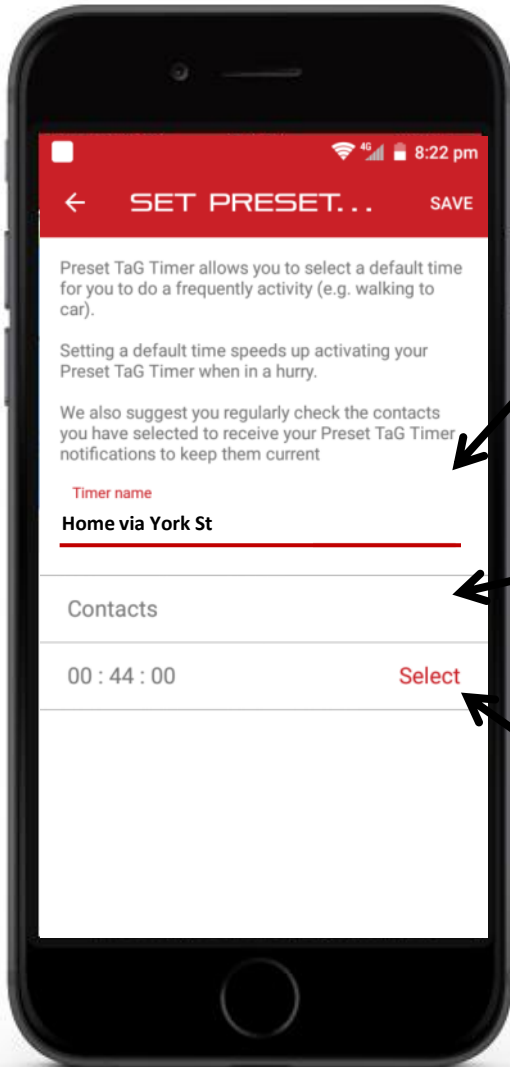
or

2.

Tap and Go +  
Settings + Preset  
Tap and Go  
to begin



# SAFE TAG APP



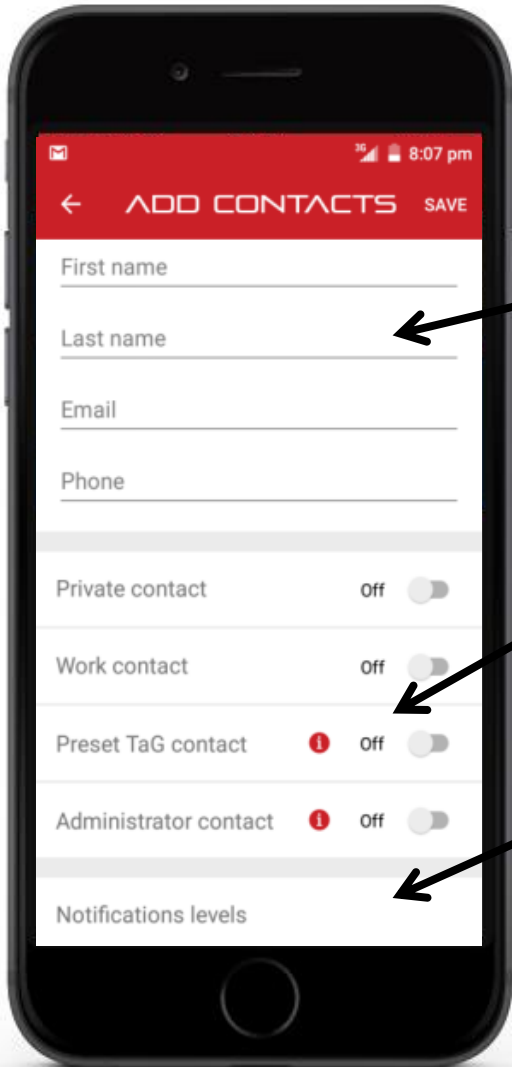
Name the activity with a destination or useful information

Add or Check Contacts or edit for this activity

Set TaG-in time for the activity and include a small buffer

Then tap SAVE

# SAFE TAG APP



Insert name and contact details

Turn on Tap and Go for this Contact

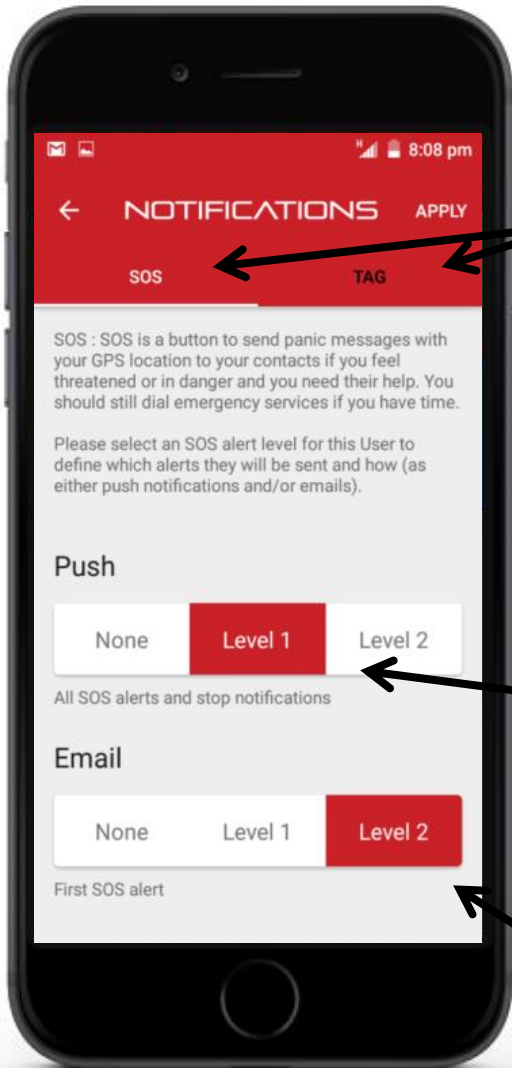
Set notification levels

Then tap SAVE

***'Contact will be allocated your Preset Tap and Go (TaG) Timer'***

# Set Notification Levels

# SAFE TAG APP



Allocate levels of notifications in both SOS and TaG for contact

The default is level 1

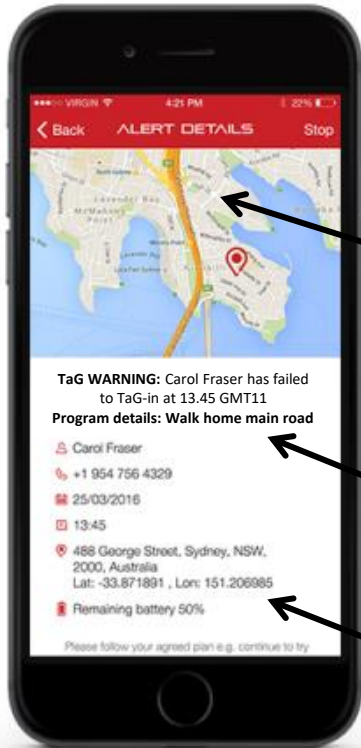
Level 1 receive all notifications.

Level 2 receive only selected notifications

***'Set for both: email and push messages (Push messages are stored in this app)'***

# SAFE TAG APP

## Contacts Receive Alerts



Interactive Map shows GPS address using GPS co-ordinates

TaG name gives useful information to help locate you and GPS co-ordinates include closest address

***'use the TaG name to give useful information to help locate you if your GPS cannot up date'***



# SAFE TAG APP

## *TIPS...*

- Your Administrator can turn off programs (top right of received Alert details).
- All SOS contacts receive SOS notifications regardless of group.
- Make a habit to use **SAFE TAG APP** regularly and it will be set for that rare occasion you need it.
- Use another app to control automatic downloads to phone if you worry about data volumes and costs.
- Set **SAFE TAG APP** to priority and turn on location when you need the full protection of **SAFE TAG**.